

INDEX

1. President's Message	page 2
2. Mission and Vision Statement	page 3
3. Board of Directors	page 4
4. Club Contacts	page 4
5. Westfield Organization Chart	page 5
6. Club Policies	
a. Accounts Receivable	page 6
b. Leave of Absence	page 6
c. Dress Code	page 7
7. Membership Categories, Leagues	page 8,9
8. Green Fee Packages	page 10
9. Tee Closures	page 10
10.2010 Tournament Schedule	page 11
11.Booking a Tee Time	page 12
12.Missed Tee Times	page 13
13.Pace of Play	page 13
14.Course Marshall	page 13
15.Handicap Computer	page 14
16.Pro Shop Hours of Operation & Service	page 15
17.Green Fees	page 16
18.Bring a Guest to Westfield	page 16
19.Practice Area	page 17
20.Course Markings	page 17
21.Courtesy on the Course	page 17,18
22.Care of the Course	page 18
23.Special Events	page 19
24.Kitchen Hours & Services	page 19
25.Beverage Cart	page 19
26.Club Rules & Regulations	page 20
27.Communication	page 20
28.Suggestions and Complaint Process	page 20

PRESIDENT'S MESSAGE

Welcome!

Whether you are a returning or new member of the Westfield Golf and Country Club, let this "Membership Handbook" be your guide. This handbook contains a tremendous amount of important information which will greatly assist you during the coming year. There is information about rates, hours of operation, booking tee times, course closures and special club events to mention just a few of the topics covered in this comprehensive member handbook.

The Westfield Golf and Country Club provides members and their guests a full range of golf services as well as food & beverage services, both on and off course. Our fully staffed and well stocked Pro Shop offers members and guest's golf lessons, golf equipment, including professional club fitting, as well as a full range of clothing, shoes and golf accessories (balls, tees, gloves, etc.).

There are a wide range of golf programs available for all members, from the Junior in the house to those now in the Senior category. Sign-ups for all club tournaments are usually posted in the locker rooms or available on-line at our club website: www.golfwestfield.com.

Our food service is second to none. A wide range of meals with daily specials are offered at reasonable prices in our beautiful clubhouse. Additional food & beverage service is offered on the golf course at set times throughout the season. There are Club Opening and Closing events as well as several other social or golf events throughout the season.

A significant amount of work has been completed over the past few years to improve the golf course and carry out renovations to the clubhouse. Westfield is governed by a volunteer Board of Directors with many active working committees. The day to day operations at the Club are run by a General Manager and staff.

I am very pleased to welcome you to Westfield for the 2010 golf season. There is something for everyone at Westfield and I hope your experience at the Club is a good one and that you have a very enjoyable year.

I would like to extend my thanks as well to the Membership Committee for once again updating this booklet.

Best regards,



D. Noel Wittrien
Club President

MISSION STATEMENT

Committed to providing members and guests with a fun and challenging experience for golfers of all abilities...on a classic course in a relaxed, friendly environment. Westfield offers top-quality, high-value services.

VISION STATEMENT

Over the next five years, Westfield Golf and Country Club will

- *enhance the course to reflect current design, safety and performance standards, without compromising the distinctive nature of the course;*
- *continually reinvest in the course, facility, staff and equipment; while maintaining financial stability and offering a high value, affordable experience for members;*
- *afford all members the opportunity to develop their skills and compete at their desired level; and*
- *provide reasonable and equitable access to the course.*

2009-2010 Board of Directors

Executive

President.....Noel Wittrien
Vice President.....Moirra Adams
Past President.....Heather Shuve
Treasurer..... James Barrington
Secretary.....Joan Hurst

Directors

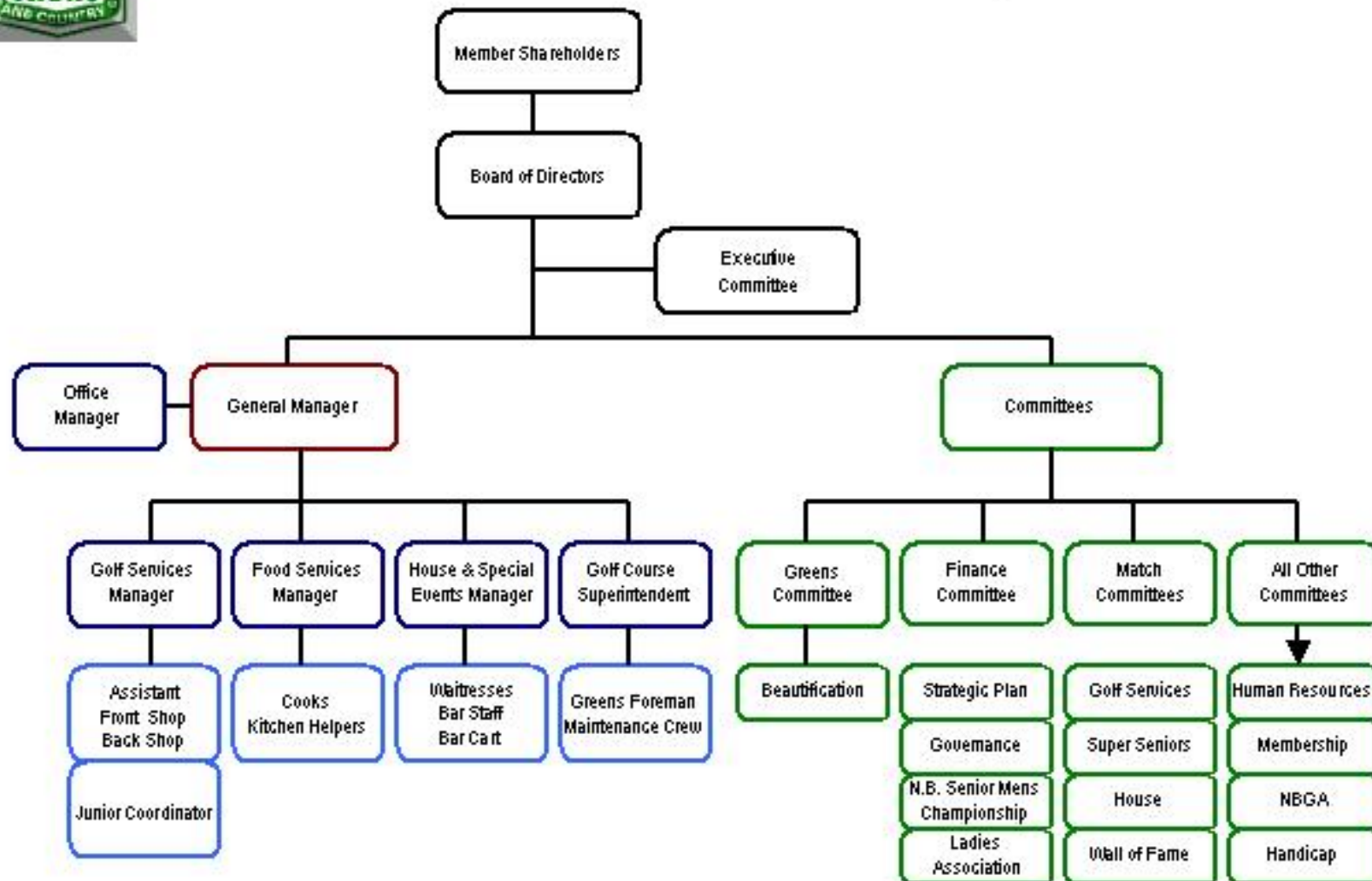
Stephen Evans	Joe Flynn
Scott Reid	Philip Reeves
Helen Kerr	Peter McCarthy

CLUB CONTACTS

General Manager	Patrick Palmer	757-2255
Administrative Office	Susan Smith	757-2250
Golf Services Manager	Marshall McMahan	757-2907
Golf Services		
Assistant Manager	Steve LeBlanc	757-2907
Club Superintendent	Paul Marr	757-2250
Men's Match Captain	Mike Graham	672-7274
Ladies Match Captain	Jane Madsen	757-2249
Niners Match Captain	Judy Nice	648-0897
	Carol Maber	696-8781
Tuesday Night Ladies		
Super Seniors President	Doug Buckley	738-8487
Ladies President	Marilyn Evans	757-1983
Beverage Cart		757-GOLF(4653)
Webpage	westfieldgolf.net	
Email	westgc@nbnet.nb.ca	
Pro Shop Email	wgccproshop@nb.aibn.com	



Westfield Golf & Country Club 2010



CLUB POLICIES

ACCOUNT RECEIVABLES

All membership dues are due on March 31st. Members are requested to pay or make arrangements regarding membership dues. Any member who has not paid by May 1st, will be subject to suspension of membership privileges unless the member is on a pre-authorized monthly payment plan. NSF cheques will result in immediate suspension of playing and charging privileges until the account is brought up to date.

Charging privileges are only extended to members who have given up to date credit card information to the office. All balances thirty days past due will be automatically charged to your credit card. Credit cards declined for payment will result in suspension of playing and charging privileges until the account balance is paid in full.

LEAVE OF ABSENCE & MEMBERSHIP REIMBURSEMENT

Membership may be regained the next season if a member is not able to play golf for one (1) season due to illness. Members must request a playing position be held for the next year by May 1st of the year in which illness prevents playing golf. The member is required to provide a written medical validation of an illness from a health professional. Further, if a member is not able to play golf for more than one season due to illness, a full playing position will be available in the golf season in which he/she is able to play again. The member must provide a written confirmation for each season in which play is not possible due to illness.

No member will receive a rebate on dues unless determined to be medically unable to play; or transferred out of town for work. No more than half of the yearly dues may be rebated. Each situation in which a rebate of dues is requested will be reviewed by the General Manager and presented to the Board of Directors at the next regular meeting for approval.

DRESS CODE – In Accordance with the NBGA

It is a member's responsibility to ensure that their guest is dressed appropriately prior to arriving at the club. Dress policy for specific events will be at the discretion of the committee for the event subject to approval of the General Manger and/or Board of Directors.

Footwear: Golf shoes (soft spikes only) and running shoes are allowed on the golf course. Shoes with cleats (soccer, football, baseball, etc.), high heeled shoes or boots are not allowed.

Pants/Shorts: All pants worn on the course must be in good repair (no holes, badly stained, etc.) must have hems, and no jeans allowed. Shorts must have hems and be of mid-thigh length. Beach- wear, gym- wear and sweat suits are unacceptable.

Shirts/Tops: All shirts worn on the course must cover the shoulders and cover to the waist. Men's golf shirts must have collars and sleeves. Mock turtlenecks are acceptable. Women's shirts without sleeves must have hems and a collar. See through, haltered, and tank tops are not allowed on the course as well as gym wear, tops with slogans or numbers, and any athletic team shirt or sweater from any other sport.

Clubhouse: Appropriate attire is expected for all areas of the clubhouse, including the dining and lounge areas. In general, golf attire is the minimum requirement to be worn on the property at any time. Jeans that are clean, neat and in good repair are acceptable in all areas of the Club except the course. Gentlemen are asked to remove their hats in the Dining Room during regular hours.

Infractions are to be brought to the attention of the Manager of Golf Services or the General Manager or their designate in charge, not to the offending member or guest.

Inappropriate dress may result in denial of playing privileges.

MEMBERSHIP CATEGORIES, LEAGUES & SPECIAL TEE TIMES

***All Adult, Senior, Intermediate and Student memberships** have FULL playing privileges each day with the exception of special tee closures outlined below.

CATEGORY	MALE	FEMALE
Adult 30-39	\$1,261.94	\$1,267.59
Adult 40-64	\$1,392.67	\$1,398.32
Senior 65+	\$1,241.94	\$1,247.59
Intermediate(19-25)	\$726.93	\$732.58
Intermediate(26-29)	\$886.93	\$892.58
Student(19-25)	\$590.35	\$596.00

***Men and Ladies Adult Monday to Friday memberships** have full playing privileges from Monday to Friday with the exception of special tee closures outlined below and holidays. Monday to Friday members may pay a green fee to play on weekends and holidays and at the discretion of the tournament organizer may play in weekend tournaments by paying a green fee and the tournament charge.

Membership Rate: Male - \$1,192.67 Female - \$1,198.32

***Tuesday Night Ladies** may tee off between 4:00 and 6:00p.m. for **9 holes** of golf during the season. If Tuesday is a rain day, ladies may tee off on the following Sunday after 4:00p.m., however the tee will not be blocked for Tuesday Night Ladies only and they must book a tee time. Individuals may participate in the Ladies Spring Brunch and Fun Day, and all social events.
Membership Rate: \$388.47

***Wednesday Morning Ladies** may play **9 holes** of golf with the Wednesday Niners. Women in this category can participate in other Niners Invitationals around southern New Brunswick. If Wednesday is a rain day, ladies may tee off on the following Sunday after 4:00 p.m., however the tee will not be blocked for Wednesday Morning Ladies only and they must book a tee time. Individuals may participate in the Ladies Spring Brunch and Fun Day and all social events.

Membership Rate: \$421.88

***Junior memberships** are available for ages 10 to 18 years of age. The program includes golf instruction and skill development at no extra cost. Junior playing privileges will be as follows: Juniors will not be given tee times

on Mondays, they must play in the field days. Juniors may tee off between 9:00 am and 1:00 pm Tuesdays, Wednesdays, Thursdays and Fridays. Juniors may tee off after 3:00 pm on Saturdays, Sundays and holidays. Juniors may tee off after 6:30 pm on Mondays, Tuesdays, Thursdays and Fridays. At the discretion of the Golf Services Manager or Assistant Manager, juniors 16 to 18 and juniors with a handicap of 10 or less may have full playing privileges except on weekend and holiday mornings when they can only play as a walk-on. Check out the “Junior” link on our website for more information.

Membership Rate: \$423.75

In House Leagues

***Wednesday Ladies 18 Holes** – Is open to all full member lady golfers. The ladies tee off in a weekly draw beginning at 9:00 am. There are organized friendly competitions throughout the season for all skill levels and prizes awarded at the Ladies Closing Dinner.

***Saturday Business Ladies**– Is open to all full member lady golfers. The ladies tee off in a weekly draw following the morning crossover beginning at 11:30 am. There are organized friendly competitions throughout the season for all skill levels and prizes awarded at the Ladies Closing Dinner.

***Wednesday Morning Niners** – Is open to all Wednesday morning lady golfers and all other lady golfers. This league provides an opportunity for ladies who wish to golf only 9 holes of organized golf. Women in this league can participate in other Niners Invationals around southern New Brunswick.

***Tuesday Night Ladies** – Is open to Tuesday Night Lady Members and all other lady golfers. This league provides an opportunity for beginners and seasoned golfers to play 9 holes in a relaxed atmosphere. See below for tee closures and other privileges.

***Men’s Twilight League** – is held on Wednesday afternoons. The tee is closed for men from 3:00pm until 6:00pm. Evening prizes are awarded weekly, based on front nine scores. Following the game the golfers enjoy a cool beverage from our sponsor and a hand of cards.

***Super Seniors** – The league is open to all male golfers from the age of 50 and up. The tee is closed on Thursday mornings at 8:30am until close of draw.

Throughout the summer there are various field days and outside tourneys. The membership fee for this league is \$30.00

GREEN FEE PACKAGES

Corporate Passes – 15 green fees for \$530.97+HST

As a Corporate Pass Holder there are certain privileges as well as some regulations that must be abided. They are as follows:

- 1) Pass Holders may introduce other green fee players as guests.
- 2) As a Corporate Pass Holder you may purchase more than one package a season. However, any given individual may use a maximum of five passes per season.
- 3) Pass Holders have use of the clubhouse and facilities.
- 4) Proper dress is required.

Get Acquainted With Westfield Pass – 10 green fees for \$375.00+HST

As a Get Acquainted with Westfield Pass Holder there are certain privileges as well as some regulations that must be abided. They are as follows:

- 1) Pass Holders may introduce other green fee players as guest(s).
- 2) The Get Acquainted package may be purchased only once.
- 3) Pass Holders have use of the clubhouse and facilities.
- 4) Proper dress is required.

TEE CLOSURES

MONDAYS: June 28th – August 9th – Junior Field Days – 10:00a.m. until 1/2 hour after the end of draw.

TUESDAYS: All season – Ladies Twilight League 4:00 - 5:30p.m. tee open to ladies only.

WEDNESDAYS: Ladies 18er's & 9er's Field Days 9:00a.m. until completion of draw.

Men's Twilight League – 3:00 - 6:00p.m.

THURSDAYS: Super Senior Field Days 8:30a.m. until completion of draw.

SATURDAYS: Saturday Morning Ladies 11:30a.m. until completion of draw.

Please note – sign up sheets for men's/mixed field days are located on the bulletin board by the handicap computers. Ladies sign up sheets are located in

the ladies locker room and junior's sign up sheets are located on their bulletin board, which is by the administration office.

Outside Events –All Westfield Invitationals require registration through the office.

Please watch bulletin boards, newsletter, and web page for other field days, Corporate Tournament tee times and closures.

2010 CLUB TOURNAMENT SCHEDULE

Ladies Sat.	May 22	Spring Brunch & Fun Day 10: 0 AM
Both Sat.	June 5	Peter Murray Field Day
Men Sat, Sun	June 19,20	Club Championship Qualifying Rounds
Ladies Wed.	June 23	Tim Hortons Westfield Ladies Invitational***
Ladies Sat.	July 4	Diana Brenan Memorial Trophy 11:00 AM
Ladies Wed.	July 7	Niners Invitational 10:00 AM
Mixed Sun.	July 11	Bud Light – Westfield Mixed Invitational *
Both Sun.	July 25	Rocca Junior Senior Scramble (<i>Shotgun start 8:00 AM</i>)
Men Wed, Thurs, Fri	July 28-30	NB Senior Men's Championship
Ladies Wed.	Aug 5	Scotch Ball 9:00 AM
Ladies Sat, Sun	Aug 7,8	Ladies/Juniors Club Championship
Men Sat, Sun	Aug. 14,15	Westfield Molson Canadian Cup **
Both Sun.	Sept 5	Chris Spencer Memorial Bestball & Club Championship Final
Mixed Sun.	Sept. 12	Jim Fox/Shot Deakin Westfield Mixed Club Championship
Both Sat., Sun.	Sept 25,26	Stor-It Systems 2 Man Scramble/Alternate Shot
Both Sun.	Oct 10	Jim Fox Hole-in-One Scramble (<i>Shotgun start 9:00 AM</i>)

* open tournament to all mixed teams with CLGA/RCGA cards

** open tournament to all men's teams with RCGA cards Must be 19 years of age or older

*** open tournament to all ladies with CLGA cards

Westfield Golf & Country Club has a reciprocal golf arrangement with Sussex and Hampton. The agreement with Hampton is for one round of golf per season and Sussex for one round of golf per month. The following conditions apply:

- *Valid Monday-Thursday (Sussex)*
- *Valid Monday-Friday (Hampton)*
- *Not Valid on Saturday, Sunday, holidays or for tournament play*
- *Maximum number of eight (8) players (2 consecutive tee times) for any group on any occasion*
- *Not in effect until both courses are open in the Spring*
- *Be prepared to show your 2010 membership card/bag tag as proof of Westfield Golf & Country Club membership*

Hampton pro Shop 832-3411; Sussex Pro Shop 433-4951 ext 1

Listed below is the schedule of the first tee time:

Opening – May 9 th	- 8:00am
May 10 th – May 23 rd	- 7:30am
May 24 th – August 29 th	- 7:00am
August 30 th – September 6 th	- 7:30am
September 7 th – September 26 th	- 8:00am
September 27 th – Closing	-8:30-9:30am

BOOKING A TEE TIME

Westfield has an online tee time reservation system that permits a member to request a tee time up to seven days in advance. The tee time requests are entered into a “lottery” and the lottery is run 60 hours in advance; i.e. if you request a tee time for Saturday, the lottery will run on Wednesday evening after 7:00 pm. After the lottery has run, the tee sheet is available for viewing and open slots can be booked.

To book online, go to our web page www.golfwestfield.com. Click on the **Tee Times** shortcut and click **Member Login** and enter your membership number and password. New members are issued the generic password **11111**. To change your password, click **Profile Update** after you have logged in. Tee Way instructions can be found on the website under the **Members & Visitors** link.

Members are sent email confirmation of requested and confirmed tee times. As a courtesy to other members looking for tee times, please cancel tee times as soon as you know that you will be unable to play. Tee times may be

cancelled online until the day of play. Tee times on the day of play must be cancelled by calling the Pro Shop 757-2907.

MISSED TEE TIMES

If an individual misses a tee time or is late they will be put into the next available tee time. In consideration to other members, if you are unable to make a tee time you are requested to cancel the tee time at the earliest opportunity. Missed or late tee times will be monitored.

PACE OF PLAY

A round of golf at Westfield Golf and Country Club should take no more than 4 hours and fifteen minutes during tournaments and four hours during casual rounds. It is a group's responsibility to keep up with the group in front. If it loses a clear hole and it is delaying the group behind, it should invite the group behind to play through, irrespective of the number of players in that group.

If you are being held up by slow play on the golf course or disruptive behavior, please inform the Course Marshal. If a Course Marshal is not on duty, the Pro Shop (757-2907) will respond to complaints. Bar carts are equipped with phones to assist in communicating.

COURSE MARSHAL

Course Marshals shall indicate by flag the status of your group. Green is good, yellow means you are lagging behind and red means that the group is out of position. The Marshal will approach and explain the situation and whether there is a hole open in front. This gives the group a chance to close the gap. If the Marshal flags the group red again then the group will be asked to pick up their balls and move to the next tee.

HANDICAP COMPUTER

The handicap computers are located on the main level hallway leading into the dining room. To access the computer you must enter your 5-digit membership number. The computer program will then prompt you through the steps to enter your score. When entering hole by hole the computer automatically adjusts for equitable strokes, otherwise you must adjust your own total score. Please see table below to find the number of strokes allowed for your handicap as well as an explanation of Equitable Stroke Control. Five scores are required to establish a handicap. If you require any assistance please ask any of the office or Pro Shop staff.

Course Handicap	Limit on any hole
Plus or scratch	1 over par
1 through 18	2 over par
19 through 32	3 over par
33 and above	4 over par

Equitable Stroke Control (ESC) is used to downwardly adjust individual hole scores for handicapping purposes in order to create handicaps that better represent a golfer's playing ability. ESC prescribes a maximum number of strokes that can be entered for any hole. This maximum is based on the golfer's Course Handicap and is obtained from the table shown above. Note: You must enter scores hole by hole (use score card) for the software to automatically calculate an adjusted gross score.

PRO SHOP HOURS OF OPERATION AND SERVICES

The Pro Shop will be open each day 30 minutes before first tee time. The Pro Shop will be open until 8:00pm on weekdays and 6:00 pm on weekends and holidays. Please check with the Pro Shop for spring and fall hours. The back-shop will remain open until dusk.

Club Storage - includes cleaning, storage, pull cart, range balls	\$115.00
- additional for cart storage requiring electricity	\$30.00
Pull Cart Rental	\$4.43
Pull Cart Package- Season	\$44.25
Power Cart Rental:	
Member 18 holes	\$26.00
Member 9 holes	\$16.00
Non-Member 18 holes	\$32.00
Non-member 9 holes	\$24.00
10 Round Cart Package	\$220.00
20 Round Cart Package 9 holes	\$260.00
20 Round Cart Package 18 holes	\$400.00
Unlimited Cart Package: **	
Individual Member	\$665.00
Two Members residing in the same household	\$770.00
Two Members not residing in the same household	\$925.00
Bucket of Balls	\$4.43
45 minute lesson with Pro:	\$40.00
with Assistant:	\$35.00
9-hole playing lesson	\$50.00

HST is in addition to the above rates

In order to guarantee a cart for casual play, it must be booked 72 hours in advance. Cart availability is not guaranteed for in house tournament play and members with cart packages must request a cart. If a cart is available at the time of request, one seat will be made available for club organized tournaments that do not require additions to our fleet.

**When two members share an “unlimited” cart package, only one cart is permitted on the course at any one time

GREEN FEES

There will be no green fee play on Saturday and Sunday mornings and Wednesday afternoons unless the individual is a guest of a member. A green fee guest may play a maximum of five times per season.

June 1-Sept 30	Weekday -	\$45
	Weekend & Holidays-	\$50
	Twilight Weekday-	\$35
	Twilight Weekend-	\$40
	9 Holes-	\$25
Open-May 31 / Oct 1-Oct 31	Weekday-	\$35
	Weekend & Holiday-	\$40
	Twilight Weekday-	\$25
	Twilight Weekend-	\$30
	9 Holes-	\$20

HST is in addition to the above rates

BRING A GUEST TO WESTFIELD

Members may bring a guest to Westfield under the following two discount programs:

1. One free guest pass for full members valid Sundays after 2:00 p.m.
2. Two 50% off guest passes for full members valid anytime Monday to Friday, and after 2:00 p.m. on weekends and holidays.

Restricted members (Tuesday Night Ladies, Wednesday Niners, Student, Monday to Friday) receive one 50% off guest pass.

All of these passes will be handled electronically at the Pro-Shop, no printed passes will be issued. When booking the tee time, insert the words "50% off Guest" or "Free Guest" in place of the person's name. During registration in the Pro Shop, the guest's name will be recorded. The member's name will also be recorded to confirm they have used their one opportunity to bring a complimentary guest. Be sure to allow enough time for an early dinner in the restaurant before you tee off or a beverage on the patio after your game.

PRACTICE AREA

Members who have purchased bag storage are entitled to complimentary range balls (1 bag per day). Other members wishing to use this area must rent pro shop range balls. Members should register at the pro shop before making their way to the practice range. Woods may be used from the upper tee; the lower tee is for irons only. Warm up nets are located beside the clubhouse.

COURSE MARKINGS

White stakes define out of bounds, yellow stakes define water hazards and red stakes define lateral hazards.

Distance markers in the fairway indicate the distance from the marker to the centre of the green. Red is 100 yards, white is 150 yards and blue is 200 yards to the centre of the green.

Flag colour on the green indicates the position of the flag on the green. Red is front, white is centre and yellow is back.

The following rules and etiquette of golf have been taken from the RCGA handbook, by following these guidelines golfers will enjoy a more pleasurable game.

COURTESY ON THE COURSE

Safety

Prior to playing a stroke or making a practice swing, the player should ensure that no one is standing close by or in a position to be hit by the club, the ball or any stones, pebbles, twigs or the like which may be moved by the stroke or swing.

Consideration for other Players

The player who has the honour should be allowed to play before his opponent or fellow-competitor tees his ball. No one should move, talk or stand close to or directly behind the ball or the hole when a player is addressing the ball or making a stroke. No player should play until the players in front are out of range.

Pace of Play

In the interest of all, players should play without delay. Players searching for a ball should signal the players behind them to pass as soon as it becomes

apparent that the ball will not be easily found. They should not search for five minutes before doing so. They should not continue play until the players following them have passed and are out of range. When the play of a hole has been completed, players should immediately leave the putting green. If a match fails to keep its place on the course and loses more than one clear hole on the players in front; you should invite the match following to pass.

Priority on the Course

In the absence of special rules, priority on the course is determined by a group's pace of play. A single player has no standing and should give way to a match of any kind. Any match playing a whole round is entitled to pass a match of a shorter round.

CARE OF THE COURSE

Holes in Bunkers

Before leaving a bunker, a player should carefully fill up and smooth over all holes and footprints made by him.

Replace Divots; Repair Ball-Marks and Damage by Spikes

Through the green, a player should ensure that any turf cut or displaced by him is replaced at once and pressed down and that any damage to the putting green made by a ball is carefully repaired.

Damage to Greens – Flagsticks, Bags, etc.

Players should ensure that, when putting down bags or flagsticks, no damage is done to the putting green and that neither they nor their caddies damage the hole by standing close to it, in handling the flagstick or in removing the ball from the hole. The flagstick should be properly replaced in the hole before players leave the putting green. Players should not damage the putting green by leaning on their putters, particularly when removing the ball from the hole.

Golf Carts

Local notices regulating the movement of golf carts should be strictly observed. Remember to keep carts 25-30 feet away from the greens and on cart paths.

Damage through Practice Swings

In taking practice swings, players should avoid causing damage to the course, particularly the tees, by removing divots.

SPECIAL EVENTS

Ladies Luncheons are held approximately every other Tuesday throughout the season. Members and their guests are treated to a lovely lunch, followed by an afternoon of a friendly game of bridge.

Thursday Night Dinners are held once or twice a month throughout the season. The dinners are reasonable priced and members are encouraged to reserve early. Consult your newsletter or online events calendar for dates of upcoming Thursday Night Dinners. Menus and prices are listed under the Special Events section of the newsletter; as well they are posted at the Club. Call 757-2250 to make reservations.

The Club hosts a variety of Social Events for our members and their guests. Date and Menus of Special Events are published in the Club's monthly newsletter, website and posted on bulletin boards.

Please call 757-2250 for all Special Event Reservations. The Club would be pleased to help organize your private dinner or event, including wedding receptions. Please contact the House and Special Events Manager to make arrangements.

KITCHEN HOURS

The kitchen will be open Monday through Friday 10:30 a.m. to 9:00 p.m. and 6:30 a.m. to 8:00 p.m. on Saturday, Sunday and Holidays. During peak season the kitchen will accept food orders until one half hour before closing. The kitchen will operate on reduced hours in the spring and fall or on rainy days.

Breakfast is served only on the weekends and holidays.

BEVERAGE CART

The beverage cart will operate on a regular basis. The hours of operation will be as follows: Mon – Fri: 10:00 a.m. - 8:00p.m.; Sat & Sun: 9:00a.m. - 7:00p.m. During the peak season beverage Cart Service can only be driven on the cart paths and service can only be provided at a tee. The Bar Cart will operate on reduced hours in the spring and fall season and on rainy days

NO ALCOHOLIC BEVERAGES ARE TO BE CONSUMED EXCEPT WHAT HAS BEEN PURCHASED FROM THE WESTFIELD GOLF AND COUNTRY CLUB. These are stipulations of our Liquor License.

RULES AND REGULATIONS

All members, while on Club property, shall conduct themselves in a reasonable and proper manner and shall not behave so as to interfere with the enjoyment of Club property, or a golf match, by any other member.

Every member who introduces a guest to the privileges of the Club shall be responsible for seeing that a similar standard of conduct is observed. Members shall at all times while on Club property dress in a reasonable and proper manner according to the occasion.

COMMUNICATION

A monthly Newsletter is published to keep members informed on all aspects of the club. This publication is sent by mail or e-mail (if you prefer) at the first of each month. Our newsletter is also posted on our web page. The clubs web page is a wealth of information; please check it out – www.golfwestfield.com

COMPLAINTS /SUGGESTION PROCESS

Complaints should be communicated in writing (forms are available in the pro shop & office) to the General Manager. The General Manager will investigate the complaint and initiate appropriate action, if any is required. If resolution of a complaint, which was dealt with by the General Manager, is not to the satisfaction of the complainant then the written complaint may be submitted to the Board of Directors c/o the Board Secretary for its review.